



Parts Manual



ECS20011 ***SELF LOAD CABLE***

MGS Incorporated , 178 Muddy Creek Church Road, Denver, PA 17517
PH 1-800-952-4228

Table of Contents



3 Introduction/Pertinent Information

5 Body Component Identification

11 Hydraulic System Information

15 Axle Information

16 Hub Component Identification

17 Brake Components

18 Lubrication

20 Tensioning Brake

21 Weight Slip

22 Warranty Information

23 NHSTA Statement



MGS Inc. was established in 1962 by owner and president Roland Gehman. The company's corporate culture is a direct reflection of Roland's desires, capabilities, and attitudes. These attitudes have developed from his experiences and relationships with his family, education, church, volunteer groups, business associates and MGS employees. We are staffed with an extraordinary group of talented people. The members of MGS consist of : salesmen, welders, sales support personnel, press and shear operators, engineers, tow motor operators, shipping and receiving personnel, purchasing agents, production controllers, administrative personnel, supervisors, painters, mechanics, cad operators, maintenance men, truck drivers, carpenters, and managers. All of which, have an impact on who we are:

INNOVATORS AND MANUFACTURERS OF TRANSPORTATION EQUIPMENT

The MGS Mission :

It is our mission to provide *the best total solution* for our customers, clients and alliance partners. These solutions are built like our products, with TEAMWORK. The combined expertise and efforts of the MGS team is what keeps us **one of a kind - not one of a group!**

About Your Trailer

MGS Model No.	ECS20011
Description	Self Load Reel Trailer
GAWR	8,000#
GVWR	9,000#
Empty Weight	2,460#
Unladen Hitch Weight	460#
Dimensions	149-7/8" X 95-15/16" X 78 - 13/16" (LXWXH)
Tire Size	245/70R17.5 LRH 6005# @ 125 PSI./ea
Coupler	Eye 3" - 4 bolt
Electrical Connection	7 way plug

This hazard alert sign appears in this manual. When you see this sign, carefully read what it says.
YOUR SAFETY IS AT STAKE.



Indicates an imminently hazardous situation which, if not avoided, will result in death or serious injury.



Indicates an potentially hazardous situation which, if not avoided, could result in death or serious injury.

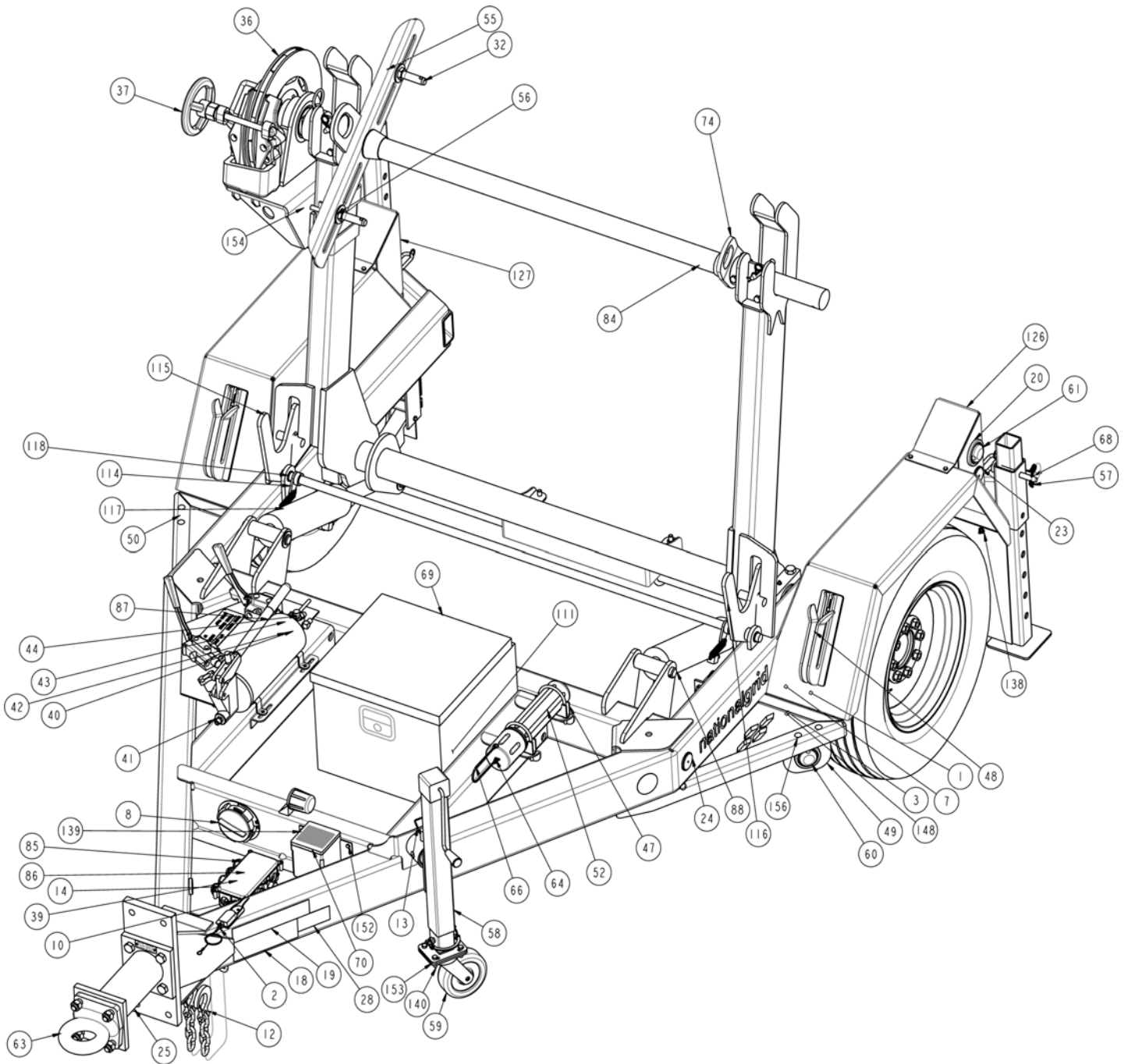


Indicates a hazardous situation which if not avoided, may result in minor or moderate injury

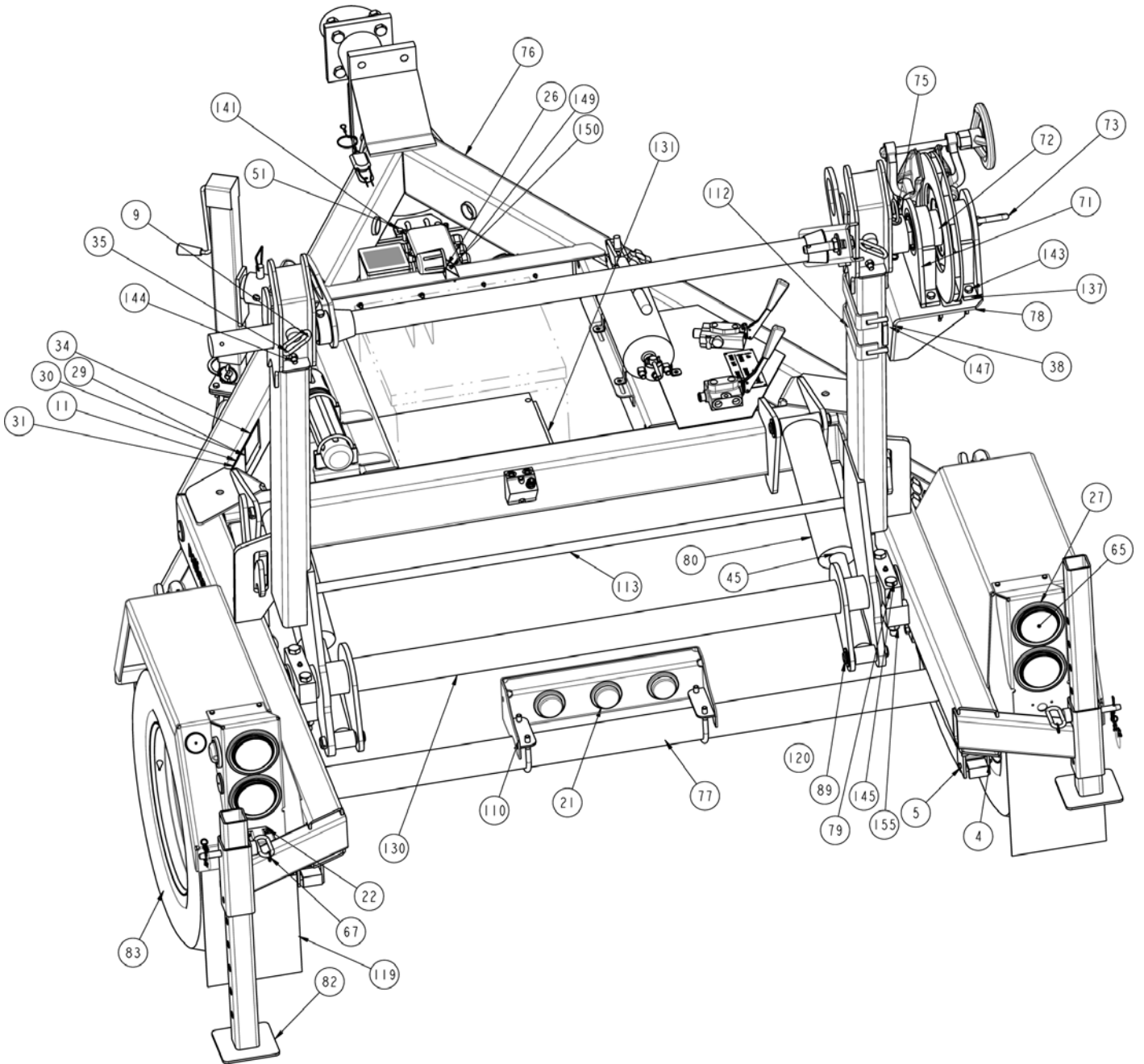
Read and Understand

Do not operate this equipment until you have carefully read, and understand the “Safety” and “Operation” sections of this manual, and of all other equipment manuals that will be used with it. Your safety and the safety of others depends upon care and judgement in the operation of this equipment. Follow all applicable federal, state, local, and industry specific regulations. MGS Inc. cannot anticipate every possible circumstance that might involve a potential hazard. The warnings in this manual and on the machine are therefore not all inclusive. You must satisfy yourself that a procedure, tool, work method, or operating technique is safe for you and others. You should also ensure that the machine will not be damaged or made unsafe by the method of operation or maintenance you choose.

Component Identification



Component Identification



Component Identification

ITEM	QTY.	PART NO.	DESCRIPTION
1	2	08095	SHACKLE BOLT LOCK NUT 9/16
2	1	10713	BREAKAWAY SWITCH
3	2	11954	CLOSED CLAMP, RUBBERIZED LOOM 1/4"
4	2	15219	5/16-18 KEEPER NUT SLIPPER SYS 6-11
5	2	15220	KEEPER BOLT SLIPPER SYS 6-11
6	16	15222	LUG NUT 5/8-18 90°
7	2	15381	SHACKLE BOLT 9/16-3 GR 5
8	1	16001	DOCUMENT HOLDER SMOKE COVER
9	4	18804	HEAVY DUTY HITCH PIN--5/8 x 4-1/2
10	1	30073	COMPRESSION FITTING, #50842, 3/4" I.D.
11	1	32591	VIN LABEL UV OVERLAY
12	2	34066	SAFETY CHAIN 3/8 GR 70 w/ 3/8 CLEVIS HOOK
13	1	34705	PIN & CHAIN ASS'Y 3/4 DIA.
14	4	39223	COMPRESSION FITTING, #50840, 3/8" I.D.
15	2	45770	3/8-16 FLATTENED END MACHINE SCREW
16	1	45881	CONNECTOR CORD
17	1	46948	DECAL, NATM COMPLIANCE
18	1	46949	DECAL, NATM COMBO PINTLE EB
19	1	46953	DECAL, TRAILER WARNING COMBO
20	7	48761	GROMMET FOR LED CLEARANCE/MARKER LAMP
21	3	48762	LED RED CLEARANCE/MARKER LAMP
22	1	48765	LED LICENSE PLATE LAMP, TRUCK-LITE
23	4	48844	RED REFLECTOR, ROUND
24	2	48845	YELLOW REFLECTOR, ROUND
25	1	51947	HITCH EXTENSION
26	1	56134	STOR-AWAY PLUG HOLDER
27	4	58828	GROMMET, STOP, TURN / TAIL LIGHT LED
28	1	61191	DECAL, OVERLOAD HAZARD
29	1	61353	TIRE & LOADING INFORMATION LABEL
30	1	61354	TIRE LABEL UV OVERLAY
31	1	61357	VIN LABEL
32	2	61769	LIFT ARM PIN
33	2	63694	GREASE ZERK
34	1	64294	PLATE, VIN & TIRE
35	2	65778	SADDLE BUSHING
36	1	65780	VENTILATED DISK, 16"
37	1	65782	BRAKE CALIPER
38	1	68262	TAP BOLT 1/2-13 X 3" HHCS Z/P
39	2	68492	COMPRESSION FITTING, #50841, 1/2" I.D.
40	1	69707	VALVE, 4 WAY HYDRAULIC DIRECTIONAL CONTROL
41	1	69709	ADAPTER, 3/8 MALE NPT TO 3/8 MALE JIC, STEEL
42	1	69710	ADAPTER, 1/2 MALE NPT TO 1/4 MALE NPT, STEEL
43	2	69711	ADAPTER ELBOW, 1/4 MALE NPT TO 3/8 MALE JIC, STEEL
44	1	69712	ADAPTER, 1/4 MALE NPT TO 3/8 MALE JIC, STEEL
45	4	69713	ADAPTER ELBOW, 1/2 MALE NPT TO 3/8 MALE JIC, STEEL
46	1	70794	GROUNDING KIT, SINGLE REEL TRAILER

Component Identification

No	Qty.	Part #	Description
47	2	71541	3" CLAMP
48	2	71867	CHOCK HOLDER W.A.
49	1	71881	LIGHT BRACKET, LEFT
50	1	71882	LIGHT BRACKET, RIGHT
51	1	71935	ANCHOR PLATE
52	1	71947	CANISTER, OPERATOR'S MANUAL
53	2	71959	LOGO DECAL
54	3	71960	UNIT NUMBER DECAL
55	2	71962	LOCKNUT, 7/8-14 THIN
56	4	71963	FLAT WASHER, USS HARDENED
57	2	72278	304 SS SASH CHAIN LANYARD, 12"
58	1	72283	TONGUE JACK W.A.
59	1	72285	ALBION CASTER WHEEL, 71XP06201
60	2	72378	MODEL 10 MARKER/CLEARANCE LAMP, AMBER, LED
61	2	72380	MODEL 10 CLEARANCE/MARKER LAMP, RED, LED
62	3	72410	GROMMET
63	1	72713	EYE 3", 4 BOLT, 60000 GROSS TRL WT
64	2	73048	SS SPLIT RING .680 O.D.
65	4	73573	SUPER 44 S/T/T LED 4" SEALED 6 DIODE
66	1	73574	TYPE 302 SS BEAD CHAIN LANYARD
67	2	73575	SPLIT RING, 316 SS
68	4	74260	DOUBLE LOOP HITCH PIN CLIP
69	1	74264	TOOL BOX
70	1	74289	BREAKAWAY BATTERY AND BOX
71	2	75318	BEARING STAND w/ BRONZE BEARING
72	1	75319	HUB
73	1	75320	BRAKE DRIVE PIN
74	1	77190	REEL LOCK ASSEMBLY
75	1	77192	HITCH PIN ASSEMBLY
76	1	77200	FRAME W.A.
77	1	77201	AXLE 8000 EB STR UNDERSLUNG
78	1	77206	BRAKE SHELF W.A.
79	2	77214	HANGER BEARING HOUSING CAP
80	2	77217	HYDRAULIC CYLINDER, 3.5 X 10, 3000 PSI
81	1	77219	ECS20011 WIRING SCHEMATIC
82	2	77220	STABILIZER W.A.
83	2	77224	T&W ASSY. 245/70R175LRH
84	1	77225	SPINDLE BAR W.A.
85	1	77237	JUNCTION BOX KIT
86	1	77240	COMPRESSION FITTING, #50843, 5-HOLE
87	1	77241	HYDRAULIC HAND PUMP, PM-HP-10-B
88	2	77242	PIN W.A.
89	2	77245	PIN W.A.
90	3	77365	ADAPTER ELBOW, #6 MALE 37° x #6 MALE O-RING
91	2	77366	ADAPTER TEE, #6 MALE 37° x #6 MALE 37° x #6 FEMALE 37°
92	5	77367	ADAPTER ELBOW, #6 MALE 37° x #6 MALE O-RING
93	2	77368	HYDRAULIC FLUID, ISO 32 (QTY PER GAL)

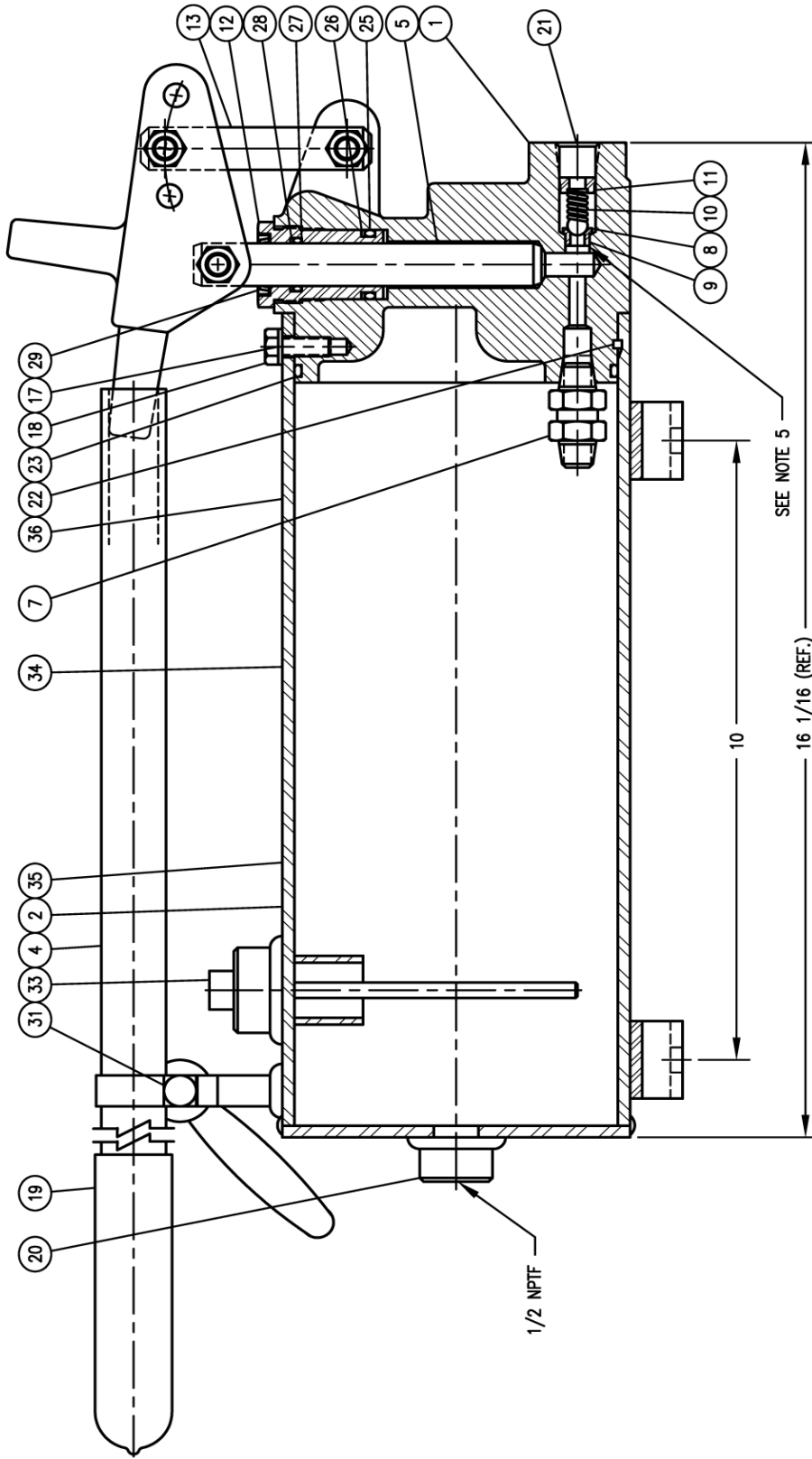
Component Identification

No	Qty.	Part #	Description
94	1	77369	HYDRAULIC HOSE, 3/8" ID, 54" LONG
95	1	77370	HYDRAULIC HOSE, 3/8" ID, 23" LONG
96	2	77371	HYDRAULIC HOSE, 3/8" ID, 33" LONG
97	2	77372	HYDRAULIC HOSE, 3/8" ID, 36" LONG
98	1	77373	ADAPTER, #6 MALE O-RING x #6 FEMALE O-RING
99	1	77393	VALVE, SELECTOR
100	1	77394	VALVE, DIRECTIONAL CONTROL
101	1	77395	HYDRAULIC COUPLING, FLUSH FACE, MALE HALF
102	1	77396	HYDRAULIC COUPLING, FLUSH FACE, FEMALE HALF
103	1	77397	DUST CAP
104	1	77398	PLATE
105	4	77399	HYDRAULIC HOSE, 3/8" ID, 20" LONG
106	4	77400	ADAPTER, STRAIGHT, #6 MALE 37°x#6 MALE O-RING
107	2	77401	HYDRAULIC HOSE, 3/8" ID, 20" LONG
108	1	77409	PLACARD, POWER SOURCE/LIFT ARMS
109	1	77410	ECS20011 HYDRAULIC SCHEMATIC DIAGRAM
110	2	78152	1/2-13 U BOLT (304 SS) 3" PIPE
111	1	79570	RUBBER LINER
112	2	79672	U BRACKET W.A.
113	1	79676	LATCH SPINDLE
114	2	79679	SPRING TAB W.A.
115	1	79682	LATCH W.A.
116	1	79683	LATCH W.A. OPP.
117	2	79685	SPRING, 41/64 O.D. X 4 LONG, .080 WIRE, LOOP ENDS
118	4	79686	BUSHING, 1" SHAFT, 1-1/4" OD, 3/4" LONG, BRONZE
119	2	79688	MUDGUARD
120	1	79689	BOLT ON 3 BAR LIGHT BOX
121	2	79692	WIRE HARNESS, LED MARKER, 120"
122	1	79693	WIRE HARNESS, LED STT RH, 156"
123	1	79694	WIRE HARNESS, LED STT LH, 156"
124	1	79695	WIRE HARNESS, LED ID, 168"
125	1	79696	WIRE HARNESS, LED LICENSE, 168"
126	1	79697	TAIL LIGHT HOUSING W.A.
127	1	79698	TAIL LIGHT HOUSING W.A. OPP
128	1	79701	COUNTERBALANCE VALVE, 3:1 RATIO
129	1	79702	HYDRAULIC MANIFOLD, 3 PORT INLINE. CROSS PILOT
130	1	79703	LIFTING YOKE W.A.
131	2	79706	TOOLBOX MOUNTING STRIP
132	4	79728	ROLL PIN, 5/16 X 1-1/2
133	1	79874	LICENSE PLATE BRACKET
134	1	79966	DUST PLUG
135	2	CLAMP-RING	CLAMP RING
136	4	FW03	3/8 FLAT WASHER
137	4	FW05	1/2 FLAT WASHER
138	4	FWW01	1/4 FLAT WASHER, WIDE
139	18	HCS01-02	1/4-20 X 1 HEX HEAD CAP SCREW
140	4	HCS03-03	3/8-16 X 1-1/4 HEX HEAD CAP SCREW

Component Identification

No	Qty.	Part #	Description
142	4	HCS03-06	3/8-16 X 2 HEX HEAD CAP SCREW
143	4	HCS05-04	1/2-13 X 2 HEX HEAD CAP SCREW
144	2	HCS05-14	1/2-13 X 4-1/2 HEX HEAD CAP SCREW
145	4	HCS08-21	3/4-10 X 6-1/2 HEX HEAD CAP SCREW
146	4	HN03	3/8-16 NUT
147	5	HN05	1/2-13 NUT
148	2	KHN03	1/4-20 KEPS NUT
149	10	KHN52	10-32 KEPS NUT
150	8	MSPH02-54	#10-32 X 3/4 PHIL PAN HEAD MACH SCREW
151	2	MSPH02-56	#10-32 X 1 PHIL PAN HEAD MACH SCREW
152	16	NLN01	1/4-20 NYLOC NUT
153	14	NLN03	3/8-16 NYLOC NUT
154	9	NLN05	1/2-13 NYLOC NUT
155	4	NLN08	3/4-10 NYLOC NUT
156	4	RHB03-05	3/8-16 X 2 SQUARE NECK CARRIAGE BOLT

Component Identification - Hydraulic Pump



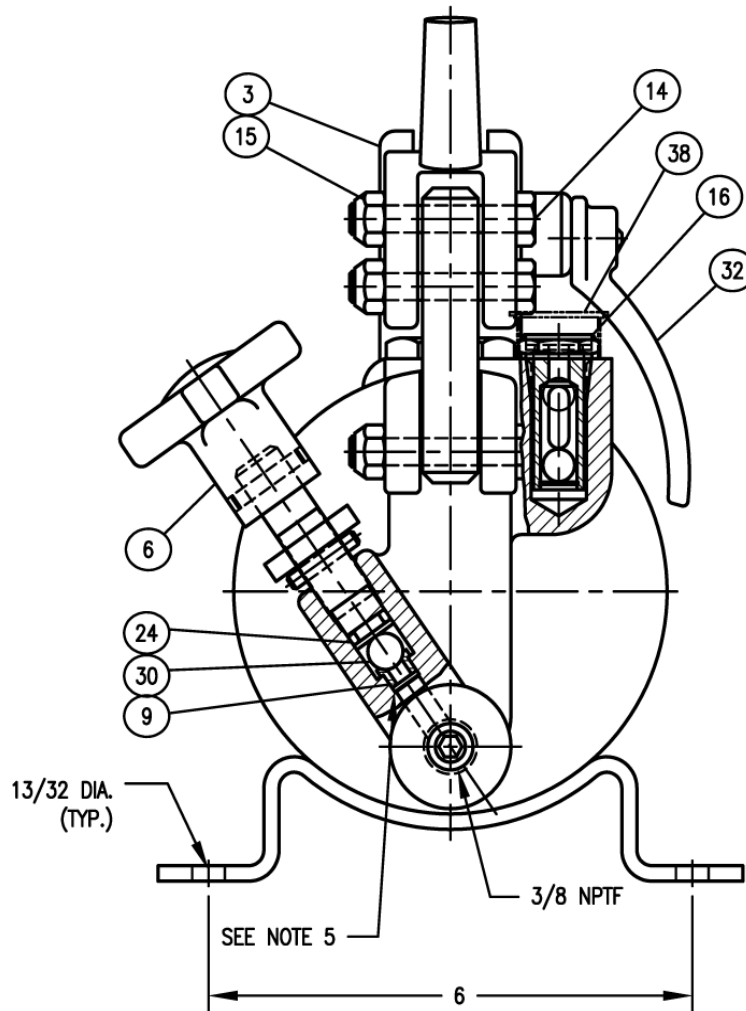
PRODUCT NOTES:

1. MAX. DESIGN & TEST PRESSURE: 3000 PSI
2. HEAD ASSY., P/N #090000122, AVAILABLE COMPLETE WITH INTERNAL PARTS AND PACKING.
3. RESERVOIR CAPACITY: 1 GALLON
4. TO USE HAND PUMP IN VERTICAL APPLICATION, INTERCHANGE BREATHER, ITEM 16, WITH PIPE PLUG, ITEM 20.
5. ASSEMBLE SEATS, ITEM 9, WITH LOCTITE #RC/680 APPLIED PER PMQC-1.
6. PAINT INSTRUCTIONS: RED PER PMS--00101.

GENERAL INFORMATION:

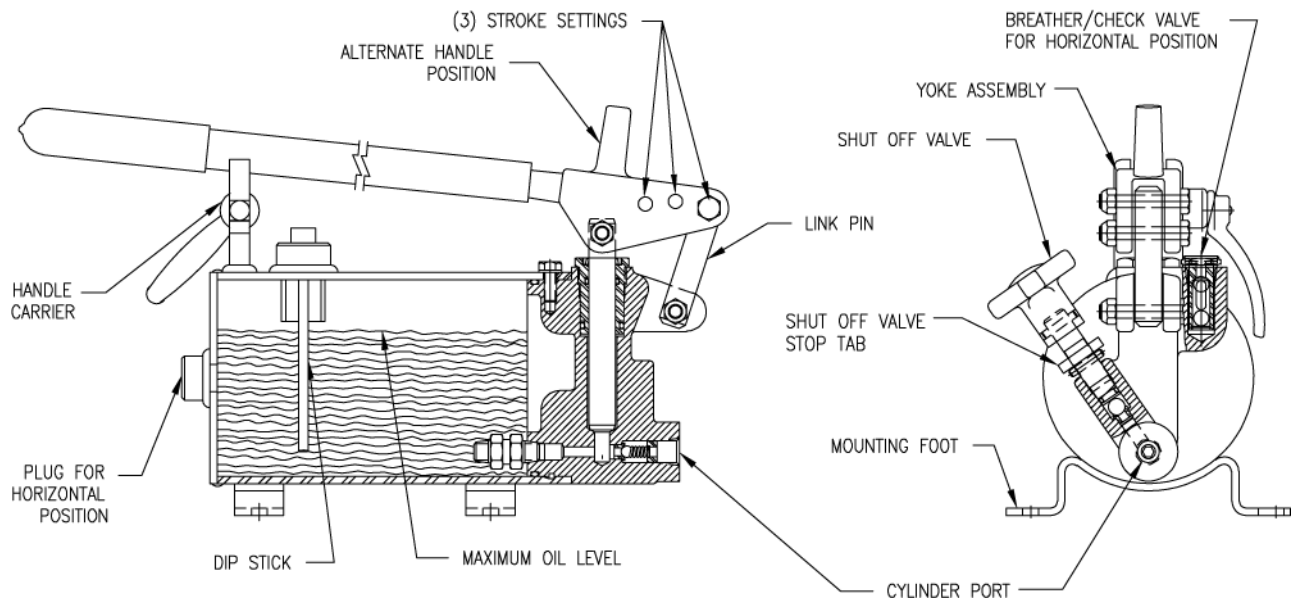
- A. UNLESS OTHERWISE SPECIFIED, THIS PRODUCT IS DESIGNED FOR USE WITH A GOOD QUALITY PETROLEUM BASED HYDRAULIC FLUID.

Component Identification - Hydraulic Pump



ITEM	QTY.	PMC PART NO.	DESCRIPTION	ITEM	QTY.	PMC PART NO.	DESCRIPTION
1	1	090000121	HEAD (SEE NOTE 2)	22	1 *	230007501	SQ. RETAINING RING
2	1	062100116	BUTT & TUBE ASS'Y	23	1 *	240000248	O-RING
3	1	090000002	YOKE	24	1 *	240000110	O-RING
4	1	050400123	HANDLE	25	1 *	240000212	O-RING
5	1	010300003	PISTON	26	1 *	240019212	TEFLON BU-WASHER
6	1	180901514	RELEASE VALVE ASSY	27	1 *	240000115	O-RING
7	1	270002006	CHECK VALVE	28	1 *	240005115	BU-WASHER
8	1	230009001	STEEL BALL-5/16 DIA.	29	1 *	250002115	WIPER
9	2	200100013	VALVE SEAT	30	1	230009003	STEEL BALL-7/16 DIA
10	1	230008003	OUTLET SPRING	31	1	170004150	SQ HD CAP SCREW
11	1	200300003	PLUG	32	1	180901073	HANDLE NUT
12	1	080600005	GLAND	33	1	180901068	DIP STICK
13	1	190300026	LINKAGE PIN	34	1	230010379	DECAL
14	3	170002089	HX. HD. CAP SCREW	35	1	230010610	DECAL
15	3	220000203	LOCKNUT	36	1	230010685	DECAL
16	1	270003020	BREATHER ASSY	37	1	230010700	INSTRUCTION SHEET- PLACE INTO CARTON
17	1	220001005	LOCKWASHER	38	1	200013922	CAP-BREATHER
18	1	170002005	HX HD CAP SCREW			090000122	HEAD ASSY-SEE NOTE 2
19	1	230010331	HANDLE GRIP			PMCK-PM-HP	PACKING KIT
20	1	200018003	PIPE PLUG-1/2NPTF				
21	1	200018002	PIPE PLUG-3/8 NPTF				

Component Information - Hydraulic Pump



THREE DIFFERENT VOLUME AND PRESSURE SETTINGS ARE AVAILABLE BY MOVING THE BOLT ATTACHING THE YOKE AND LINK.

POSITION #1: 1.25 CU. IN. PER STROKE - 1500 P.S.I.* (SHOWN IN SCHEMATIC)

POSITION #2: .95 CU. IN. PER STROKE - 2000 P.S.I.*

POSITION #3: .60 CU. IN. PER STROKE - 3000 P.S.I.*

* BASED ON AN APPLIED FORCE OF 60-65 LBS. ON THE HANDLE

THE HANDLE CAN BE CLAMPED IN THE CARRIER TO PREVENT LOSS ON MOBILE APPLICATIONS, OR FOR CARRYING ON PORTABLE APPLICATIONS.

OIL FILLING CAN BE ACCOMPLISHED AT EITHER THE BREATHER PORT OR THE DIPSTICK PORT. CARE SHOULD BE TAKEN NOT TO FILL ABOVE THE BOTTOM OF THE DIPSTICK PORT. FILLING ABOVE THE BOTTOM WILL RESULT IN DAMAGE TO THE BREATHER/CHECK VALVE ASSEMBLY. *DO NOT FILL WITH THE CYLINDER EXTENDED.* THIS, ALSO, RESULTS IN AN OVER FILL CONDITION THAT WILL DAMAGE THE BREATHER/CHECK VALVE ASSEMBLY.

WHEN THE PUMP IS BOLTED DOWN AND ALL LINES ARE HOOKED UP, IT WILL BE NECESSARY TO PRIME IT IN ORDER TO START THE OIL FLOWING. TO DO THIS, FILL WITH OIL TO THE PROPER LEVEL, PUT THE LINK PIN IN THE FIRST POSITION (AS SHOWN IN THE SCHEMATIC). OPEN THE SHUT-OFF VALVE AND PUMP SEVERAL TIMES. THEN CLOSE THE SHUT-OFF VALVE AND USE THE HAND PUMP NORMALLY.

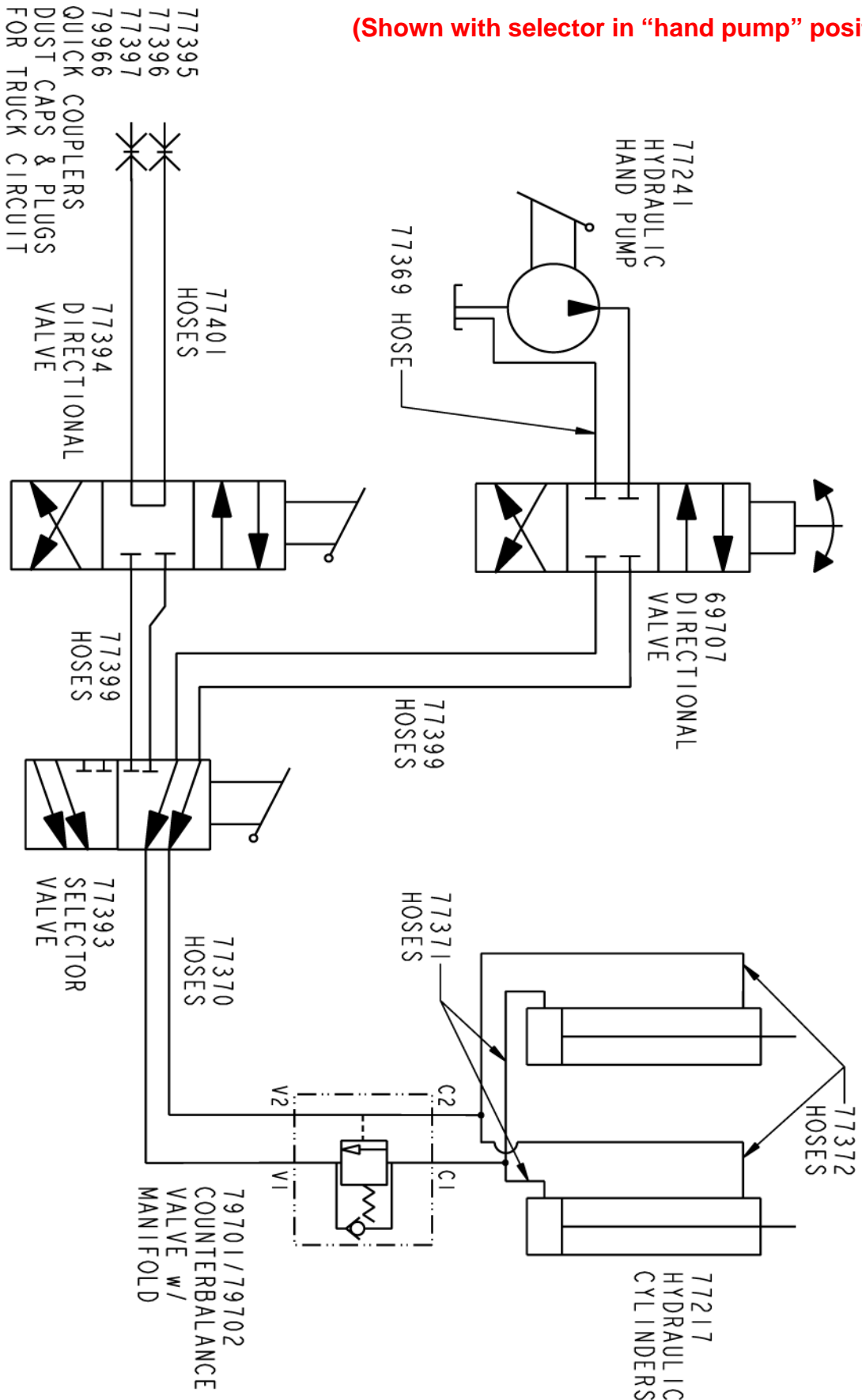
In position #1 (the position in which the trailer is shipped) It will take approximately 115 strokes to move the uprights from vertical to horizontal.

Position 2 = approx. 150 strokes

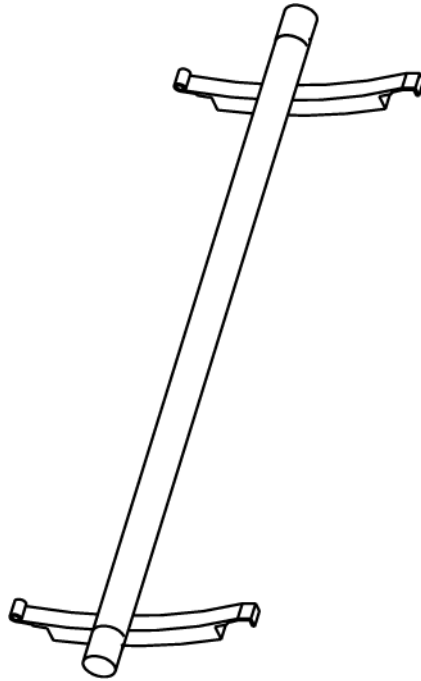
Position 3 = approx. 230 strokes

Hydraulic Schematic

(Shown with selector in "hand pump" position)

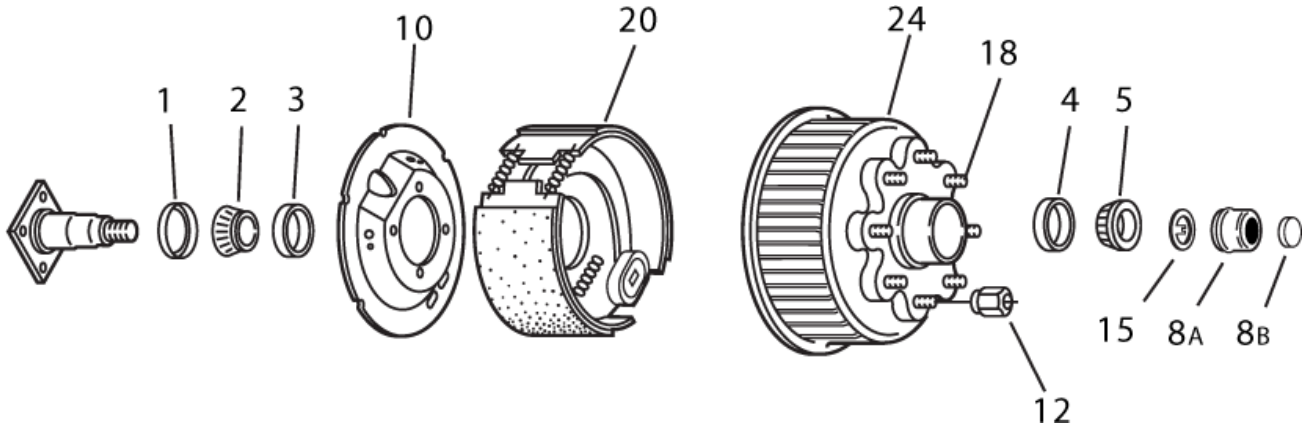


Axle Information



RATED CAPACITY (LBS)	8000
BRAKE STYLE	ELECTRIC
BRAKE #	LH:23-434-00, RH:23-435-00
PARKING BRAKE	NO
PARKING BRAKE CABLE	NO
SPINDLE TYPE	STRAIGHT, 3.50 X .25
HUB GROUP DESIGNATION	865
E-Z LUBE HUBS	YES
STUDDED HUB	YES, 5/8
SPRING #	72-51-1
SPRING TYPE	SLIPPER
SPRING CENTER (INCHES)	70-1/2
SPRING LOCATION	UNDER
HUB FACE (INCHES)	86-1/2

Hub Components



GREASE LUBE PARTS

Item	Part No.	Description
1	010-063-00	Seal (Unitized)
2	031-030-02	25580 Inner Bearing Cone
3	031-030-01	25520 Inner Bearing Cup
4	031-028-01	02420 Outer Bearing Cup
5	031-028-02	02475 Outer Bearing Cone
6	006-176-00	Spindle Nut
6	006-001-00	Spindle Nut - E-Z Lube™ only
7	019-002-00	Cotter Pin (not for E-Z Lube™)
9	005-057-00	Spindle Washer
8A	021-043-01	Grease Cap E-Z Lube™
8B	085-001-00	E-Z Lube™ Plug
ns	021-021-00	Grease Cap
15	005-101-00	Tang Washer for E-Z Lube™ only

12¼ x 3⅜ Brakes

Item	Part No.	Description
10	036-115-20	Dust Shield
10	036-115-24	Dust Shield for brakes w/park
20	023-097-00/023-098-00	LH/RH Self-Adj. Electric Brake
ns	023-138-00/023-139-00	LH/RH Self-Adj. Hyd. Brake Duo-servo
ns	023-171-00/023-172-00	LH/RH Self-Adj. Hyd. Brake DS w/park
ns	023-250-00/023-251-00	LH/RH Hyd. Brake Uni-servo
ns	023-252-00/023-253-00	LH/RH Hyd. Brake Uni-servo w/park

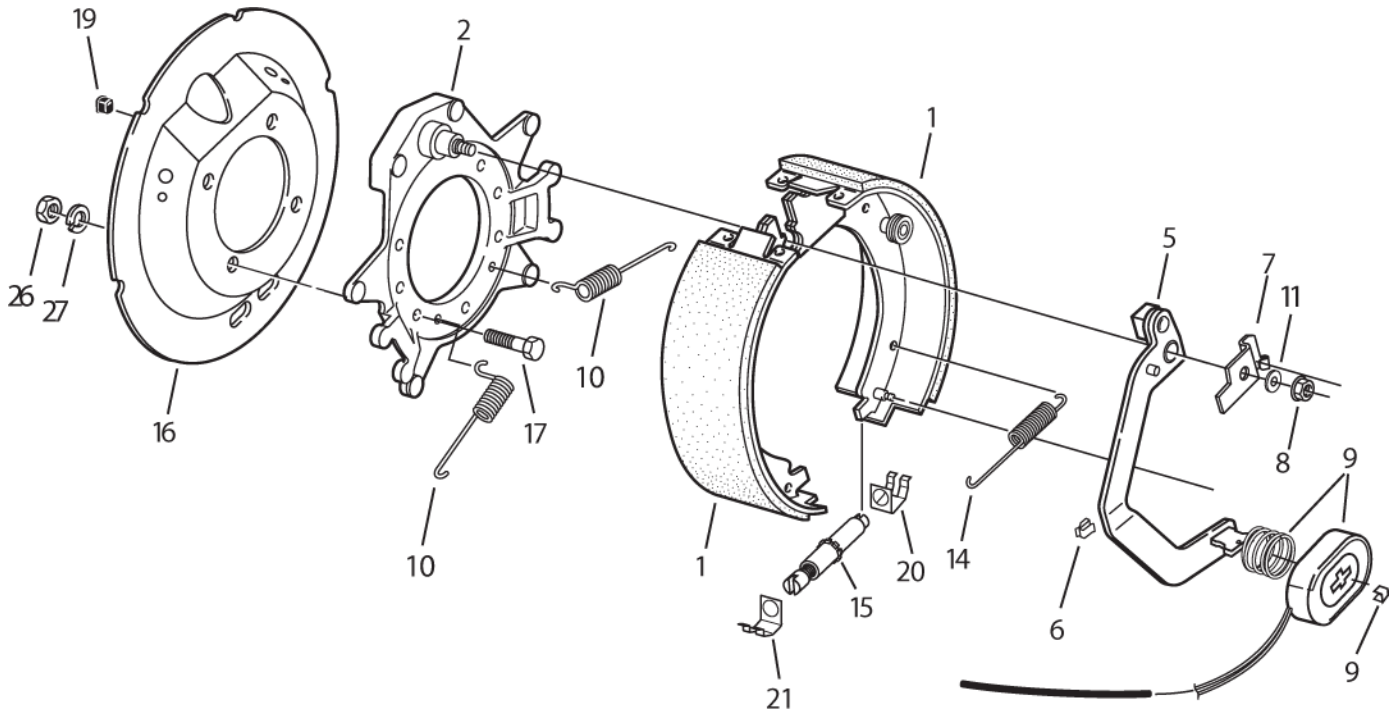
HUBS

Item	Part No.	Description	Bolt Circle
<i>Hubs and Drums</i>			
24	008-285-08	Grease 5/8" studs	8-6.50

STUDS & WHEEL NUTS

Item	Part No.	Description
12	006-109-00	5/8-18 90° Cone

Brake Components

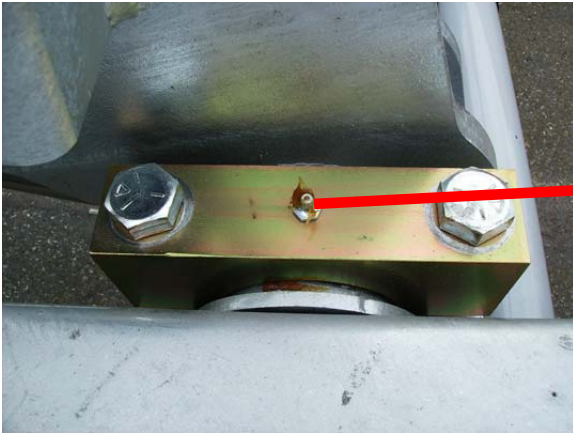


ELECTRIC

Item	Part No.	Qty/Brk	Description
0	023-434-00	1	LH Complete Brake Assembly
0	023-435-00	1	RH Complete Brake Assembly
1	K71-498-00	1	LH Shoe & Lining Kit containing: 1 #040-350-01 LH Prim. Shoe & Lining 1 #040-351-02 LH Sec. Shoe & Lining
1	K71-499-00	1	RH Shoe & Lining Kit containing: 1 #040-351-01 RH Prim. Shoe & Lining 1 #040-350-02 RH Sec. Shoe & Lining
2	036-119-02	1	Backing Plate Assembly
5	047-123-38	1	LH Actuating Arm Assembly
5	047-123-37	1	RH Actuating Arm Assembly
6	027-039-00	3	Wire Clips
7	071-455-01	1	LH Arm/Shoe Retainer
7	071-455-02	1	RH Arm/Shoe Retainer
8	006-062-00	1	Flange Nut
9	K71-375-00	1	Magnet Kit containing: 1 #042-127-00 Magnet 1 #027-050-00 Magnet Retainer Clip 1 #046-117-00 Magnet Spring
10	046-136-00	2	Centering Spring
11	071-462-00	1	Adjuster Cable
12	071-464-00	1	LH Adjuster Lever
12	071-463-00	1	RH Adjuster Lever
14	046-137-00	1	Adjuster Spring
15	048-019-00	1	LH Adjuster Assembly (silver)
15	048-020-00	1	RH Adjuster Assembly (gold)
16	036-115-20	1	Dust Shield
17	007-097-00	4	Brake Mounting Bolt
19	046-016-00	1	Wire Grommet
20	046-133-00	1	Adjuster Clip (barrel end)
21	046-132-00	1	Adjuster Clip (thread end)
26	006-129-00	4	Brake Mounting Nut
27	005-058-00	4	Lockwasher

Lubrication of Body Components

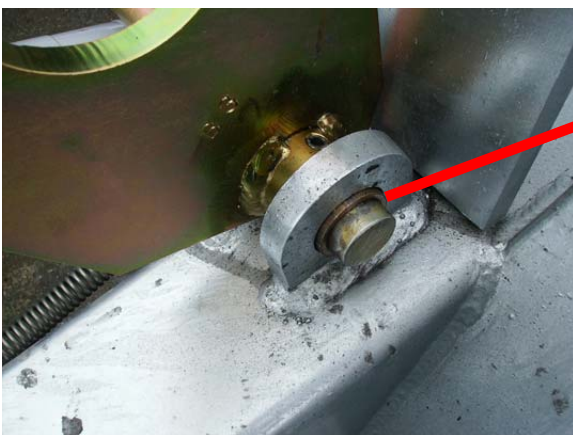
MGS recommends using a lithium base, high pressure grease



Lubricate the grease zerk fittings in the torque tube assembly. One located on each side of the tube mounted in bearing cap



Lubricate grease zerks found on each pivot of the hydraulic cylinders. Two per side located underneath the cylinder

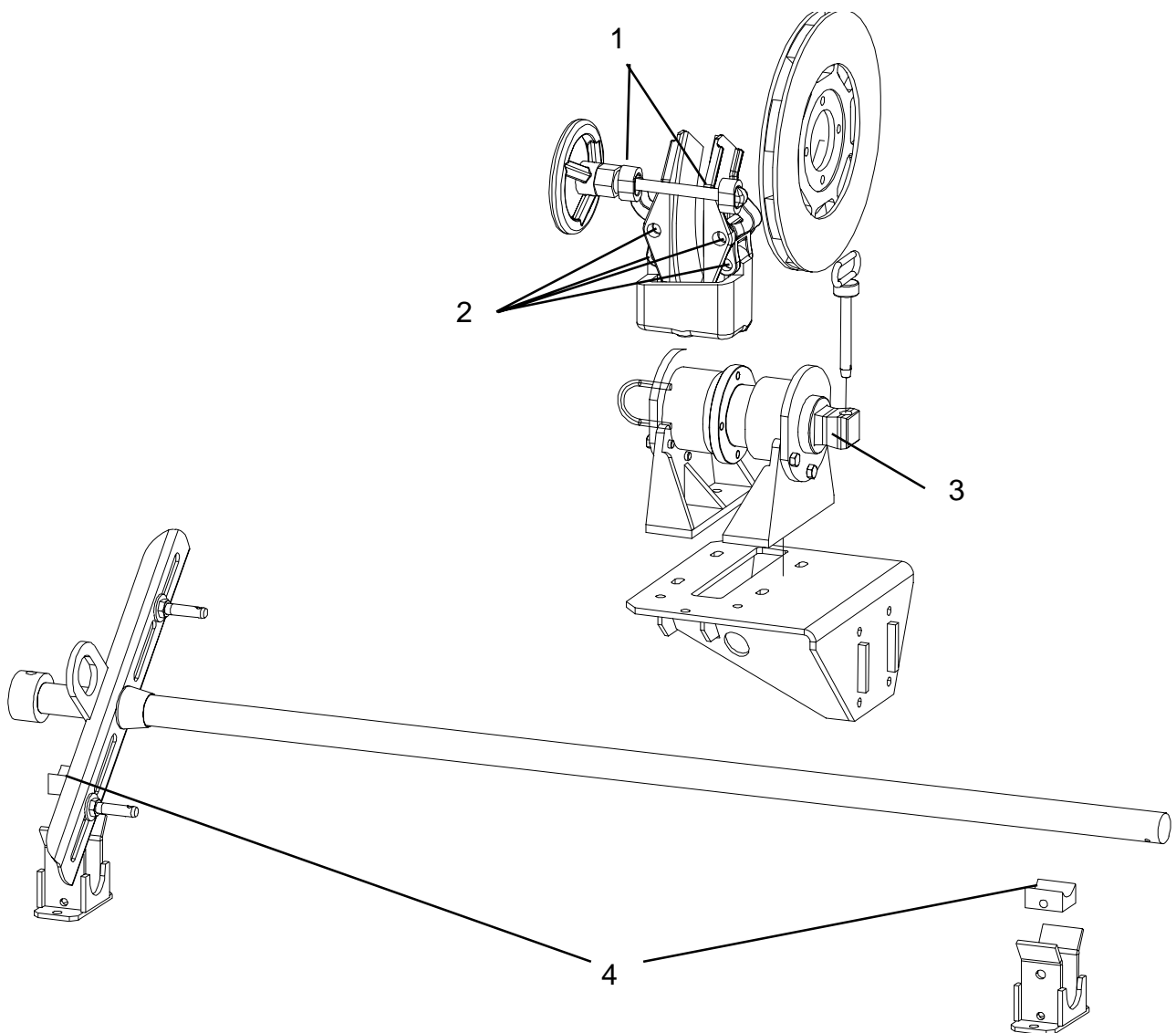


Reel frame latch is supplied with oil impregnated bushings and does not require lubrication. Two bushings per side located inboard and outboard of the latch shaft.

Lubrication of Body Components

The following components should be lubricated during your normal preventative maintenance schedule:

1. Tensioning wheel assy- Small amount of wheelbearing grease to threaded area
2. Caliper Pivots - Light coating of penetrating oil (four pins, lube both sides)
3. Drive Pin - Coat entire surface of square pin with wheel bearing grease
4. Spindle Bushings- Coat mating surfaces with wheel bearing grease



Tensioning Brake

Your trailer is supplied with one or more tensioning brakes. Please refer to the image below for description of functional parts.

To change the pressure exerted against the rotor by the brake pads, rotate the brake tension adjustment wheel until the appropriate tension is achieved. On the unit below, rotate the adjustment wheel clockwise to increase tension and counterclockwise to decrease tension.



WARNING

WARNING - Hazards or unsafe practices which **COULD** result in severe personal injury or death if the warning is ignored.



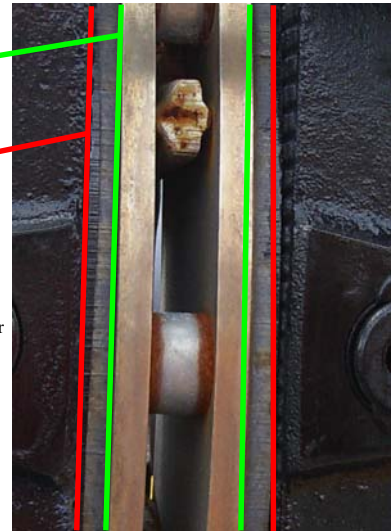
CAUTION

CAUTION - Components of the braking assembly can reach temperatures approaching 500 degrees fahrenheit which could result in minor or moderate injury. Be sure that all surfaces of the brake assembly have cooled prior to contact. Failure to comply with this practice could result in minor or moderate injury if this warning is ignored

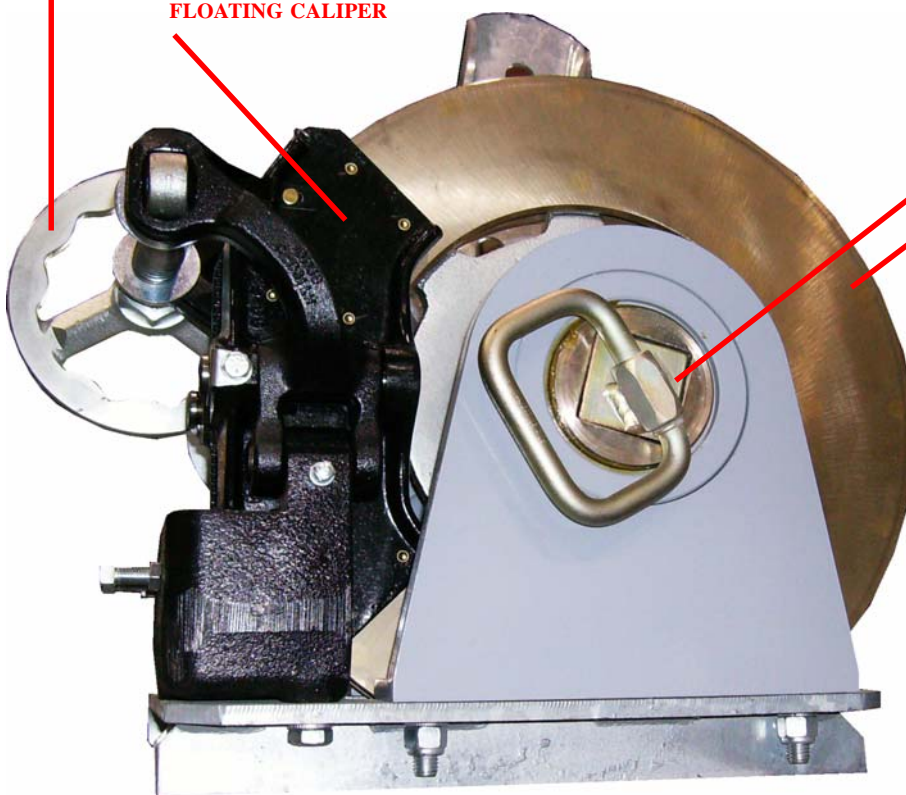
The engagement pin must be in the position shown below with the locking pin in place prior to any tensioning operation. Always be sure that the brake mechanism is working properly before use. Caliper, pin and hub should be adequately lubricated to operate properly. Pads should be inspected for wear prior to operation. Beginning pad thickness (measured from cast backer) is .25". Rivet heads will begin to contact rotor at .125" (measured from cast backer). Do not operate tensioning brake if pad wear exceeds .150".

Do not operate if under .150" thickness

Brake pad friction material thickness is illustrated as the distance between the red and green lines. If less than .150", the friction material needs to be replaced. Rivets will contact rotor at .125"



BRAKE TENSION ADJUSTMENT WHEEL
FLOATING CALIPER



ENGAGEMENT PIN
BRAKE ROTOR

Weight Slip



MARTIN LIMESTONE, INC.

SUBSIDIARY OF NEW ENTERPRISE STONE & LIME CO., INC.
BLUE BALL, PA. 17506

**ECT20011
WEIGHTS ARE
FOR TRAILER
LESS GROUND
KIT**

PLANT NAME DENVER
& NUMBER PLANT NUMBER 08 PHONE (717) 354-1370

ORDER NO	TICKET NUMBER M SCALE 2 0853216	DATE 10/31/2008	TIME 9:26 AM
CUSTOMER ID 9025752	S O L D M G S INC 178 MUDDY CREEK CHURCH RD DENVER, PA 17517		
JOB SITE ID	S H I P GROSS=2460	STATE PA CITY ZONE	
PRODUCT I.D. 98125	PRODUCT DESCRIPTION WEIGHING		
QUOTATION NO./CUSTOMER P.O.		EXTRA CHARGE, PLOWED/NOT WORKED EXTRA CHARGE, LESS THAN 1 TON/ACRE	CUSTOMER PHONE NO.
TAG NO.	NO. AXLES 0	TRUCK NO. 08	CARRIER NAME CARRIER CODE

Pick-up XX	Freight PPD	Freight Collect	ACCUMULATIVE QUANTITIES		CHARGE <input checked="" type="checkbox"/>	C.O.D. <input type="checkbox"/>
US Weight 2,460	METRIC Weight		Ordered		MATERIAL	UNIT PRICE TOTAL
2,000			Today	Loads	HAUL	
460			To Date	Loads	ADD'L CHARGES	
			Accumulated Cash Sale		TAX	
WEIGHED BY BRENDA J. TUCKER 020898					TOTAL THIS LOAD ▶	

INSPECTORS SIGNATURE <i>mjs</i>	JOB ARRIVAL TIME	JOB DEP'T TIME
RECEIVED ABOVE MATERIAL IN GOOD CONDITION <i>XC Sheaffer</i>	A SERVICE CHARGE, NOT TO EXCEED THE MAXIMUM ALLOWABLE BY LAW, WILL BE APPLIED TO ALL AMOUNTS OVER 30 DAYS PAST DUE.	
DELIVERY INFORMATION TONGUE = 460 AXLE = 2000	0000000000	
YOUR BUSINESS IS GREATLY APPRECIATED.		

0853216

PLANT DIRECTORY					
01 WEAVERLAND PLANT (717) 354-1370	03 VIOLA WAREHOUSE (302) 284-9151	06 BURKHOLDER PLANT (717) 354-1370	11 HONEY BROOK (610) 273-2921	13 SCHOENECK PLANT (717) 354-1370	
02 LIMEVILLE PLANT (717) 354-1370	04 DELMAR WAREHOUSE (302) 284-9151	08 DENVER PLANT (717) 354-1370	12 NARVON PLANT (717) 354-4941		

CUSTOMER'S COPY



MGS 1-Year Limited Warranty

MGS Incorporated (Seller) hereby warrants, for a period of **ONE** years from the date of purchase, to the first buyer- purchaser (Purchaser) of a **MGS Trailer** manufactured by Seller (Product) that the Product shall be free from defects in material or workmanship, provided timely notice of any claim on this warranty is given to Seller by Purchaser. *Notice of any warranty claim shall be untimely if written notice of such claim is not given to Seller in writing within fifteen (15) days from the date Buyer has discovered or, with the exercise of reasonable diligence, would have discovered any such defect in material or workmanship giving rise to such warranty claim. Any claim for breach of warranty which is not timely made shall be deemed waived by purchaser.*

Provided that a timely notice of a warranty claim is made for a defect in material or workmanship rising during the warranty period. Seller shall repair or replace any defective Product or portion thereof, or, at its option, may refund the purchase price for the Product. All decisions concerning whether a Product or any portion thereof is defective and whether said defects should be repaired or the Product replaced, and the manner, method and extent of such repairs, shall be within the sole discretion of Seller. Any alteration or repair to a Product or any portion thereof made by Purchaser without the prior written approval of Seller shall be done at Buyer's own risk and expense and shall invalidate this warranty.

Seller makes no warranty in connection with any components provided with the Product subject to a separate manufacturer's warranty and any claim relating to such goods shall lie exclusively against the manufacturer of such goods.

This warranty is made in lieu of all other warranties, express, implied or statutory. **Seller expressly disclaims any warranty or merchantability or warranty of fitness for a particular purpose or use.**

The express warranty provided herein shall be Purchaser's sole and exclusive remedy for any defects in material or workmanship relating to Product. Under no circumstance shall Seller be liable to Purchaser or any other person for lost profits, additional expenses incurred in repairing or replacing the Product or any other special, incidental, indirect or consequential losses of damages of any kind. Purchaser shall have no claim under this warranty for ordinary wear and tear or for abuse, misuse, improper installation or maintenance or alteration of or repairs to the Product unless such repairs have been authorized in writing by Seller prior to said repair.

Notice of any claim under this warranty must be made in writing and sent to Seller by certified mail, return receipt requested addressed to: MGS Incorporated, Sales Department, 178 Muddy Creek Church Road, Denver, PA 17517.



If you believe that your vehicle has a defect which could cause a crash or could cause injury or death, you should immediately inform the National Highway Traffic Safety Administration (NHTSA) in addition to notifying MGS Inc.

If NHTSA receives similar complaints, it may open an investigation, and if it finds that a safety defect exists in a group of vehicles, it may order a recall and remedy campaign. However, NHTSA cannot become involved in individual problems between you, your dealer, or MGS Inc.

To contact NHTSA, you may either call the Auto Safety Hotline toll-free at 1-800-424-9393 (or 202-366-0123) or write to: NHTSA, U.S. Department of Transportation, 400 7th street, SW, NSA-11, Washington, DC 20590. You can also obtain other information about motor vehicle safety from the Hotline.